

A. Gill Lumber

HOWARD MARINE PTY. LTD.
24 SANDGATE ROAD
ALBION 4010
PHONE 262 2344

37 Bankly st
Box Hill
3K8
\$110-00

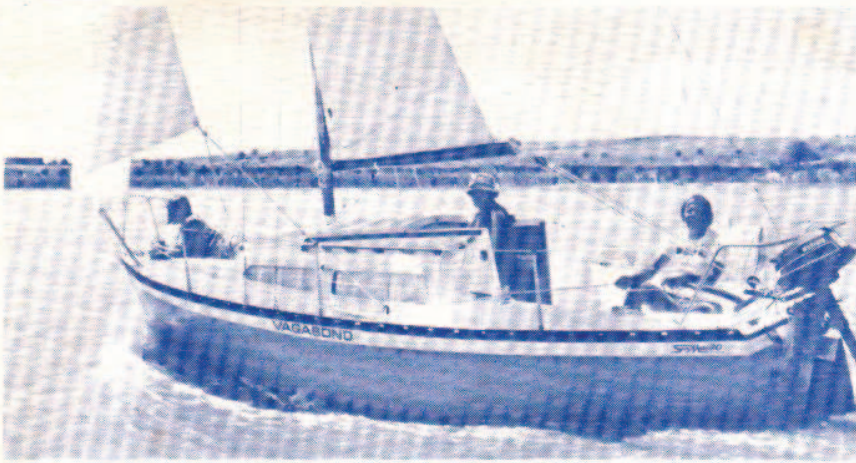
**THE
BEST
SAILBOAT
VALUE
AFLOAT**



Approved
self-righting
by J.O.G. and A.Y.F.
for racing in
suitable divisions.

Sun/Maid 20

C. D. & E. M. HALL, 613 NEPEAN HIGHWAY, CARRUM, 3197 • 772 4331



Sun Maid 20

The "Sun Maid 20" is a ballasted centre board sloop of medium displacement designed by John Brooke M.R.I.N.A. (N.Z.) to race competitively in the quarter-ton or J.O.G. divisions, and also to provide safe comfortable family cruising with facilities and accommodation usually associated with much larger yachts.

Easily handled ashore or afloat by a crew of two, Sun Maid 20 can be moored or trailered to lake or sea.



The hull deck and interior are moulded separately in fibreglass to Lloyds specifications. The lead ballast is moulded and bolted in the bottom of the skeg. The galvanised steel centreplate is easily raised and lowered by a simple winch. Total ballast and centreplate weight approximately 800 lb. — giving a 45% ballast ratio. This, coupled with an advanced design hull shape gives excellent stability and performance.

The cabin is roomy with 4 King Size bunks, and better than 4'6" headroom. There are 11 large storage areas below bunk level, with cupboard and locker space above, sink, ice box, and stove shelf are built in. The cockpit is self draining with an 18" bridge deck. The spray moulds are comfortably angled and 18" high. You sit in the cockpit with comfort for at least 6 adults.

The 15/16 rig utilises anodised aluminium spars, 1 x 19 stainless steel rigging with top quality sheet winches and deck fittings. Sails are a heavy duty terylene and the range of headsails ensures comfortable performance. R/R or slab reefing are available for the mainsail.

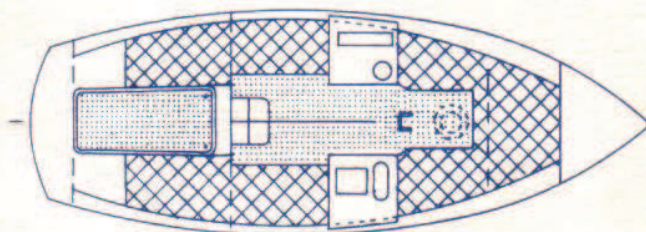
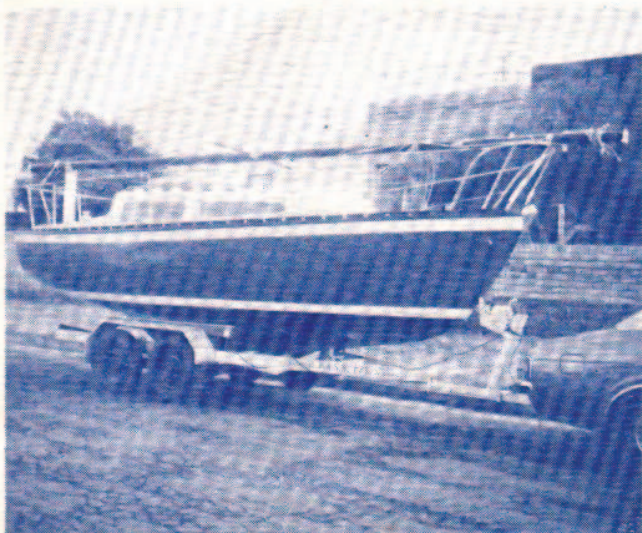
The whole concept in the development of the "Sun Maid 20" is one of quality, to produce a boat that you will be proud to own, and enjoy to sail.

SunMaid

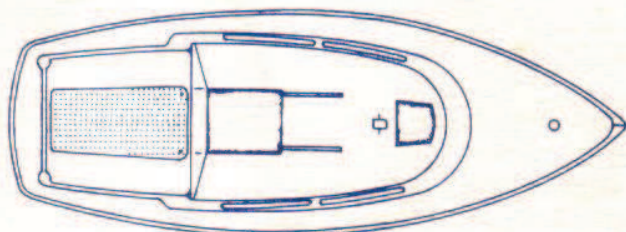
is the **BEST SAILBOAT VALUE AFLOAT**

No other boat offers all these **FEATURES** in 20 or even 25 feet.

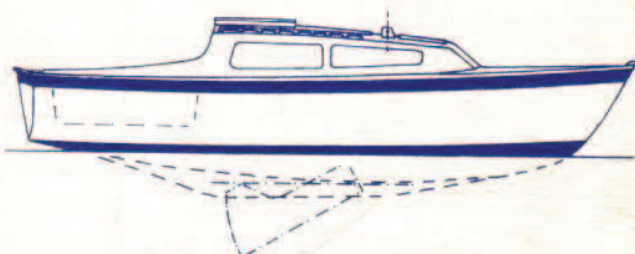
1. John Brooke design reflecting nearly 50 years of practical design and sailing experience.
2. Hand laid solid fibreglass construction in excess of Lloyds requirements.
3. Deep keel or centreplate under-water configuration.
4. External lead ballast LOW down below waterline; 600 lb. for safety and stability.
5. Lead ballast does not exert sailing strains on the centreplate or its casing.
6. Centrecase integrally moulded into hull; no leaks, superior strength and safety.
7. Half inch steel centreplate, galvanised, gives windward performance and stability.
8. Simple, lightweight winch control of centreplate.
9. **SAFETY FEATURES** include **SELF RIGHTING** and **SELF DRAINING COCKPIT**.
10. 1 x 19 by half inch stainless steel rigging for strength and durability.
11. All stainless steel rigging screws and quality fittings.
12. Four **FULL SIZE** bunks
13. **HUGE**, well planned galley area includes; 4.5 cu. ft. insulated ice-box, sink, built in stove area, concealed plate and cutlery racks, and plenty of cupboard space.
14. 12 gallon water tank.
15. Provision to fit Porta-Potti.
16. Self draining, covered **ANCHOR WELL** on foredeck.
17. **AEROFOIL** rudder blade to give positive control.
18. Aluminium framed, tinted windows.
19. Full range of colors at no extra cost.
20. **FUEL TANK** (6 gall.) built in.



INTERIOR PLAN



DECK PLAN



SIDE ELEVATION



Sun/Maid 20

SPECIFICATIONS:

Designer	J. B. Brooke MRINA (N.Z.)
Australian Manufacturer	C. D. & E. M. Hall
Length Overall	20 feet
Beam	7 feet 6 ins.
Draught (plate up)	1'3"
Draught (plate down)	3'3"
Displacement	1800 lb. (approx.)
Ballast	800 lb. (approx.)

SAIL PLAN:

	LUFF	FOOT	LEACH	AREA
Main	21'8"	9'	24'	105 sq. ft.
No. 1 Genoa	23'6"	11'9"	22'8"	130 sq. ft.
No. 2 Genoa	20'6"	9'6"	18'6"	90 sq. ft.
Jib	18'6"	7'6"	15'6"	60 sq. ft.
Storm Jib	13'9"	6'3"	9'10"	30 sq. ft.
Spinnaker	25'0"	15'0"	25'0"	330 sq. ft.

MAST SECTION E7650 (4.125 x 2.900) 25'0" Anodised aluminium

Boom Section E7658 (3.125 x 3.312) 9'3" Anodised aluminium

C. D. & E. M. HALL, 613 NEPEAN HIGHWAY, CARRUM, 3197 • 772 4331

Postal Address: P.O. Box 101, Mt. Eliza, 3930.