



Sabre 22

Escape from the everyday pressures
with your family and friends.



17 Settee and Quarter berth with large storage compartments under.

The accommodation in the Sabre 22 is luxurious and yet practical, with all upholstery in crushed synthetic velvet. Cabinet work is in Queensland Maple throughout and finished with 2 pot polyurathane varnish.

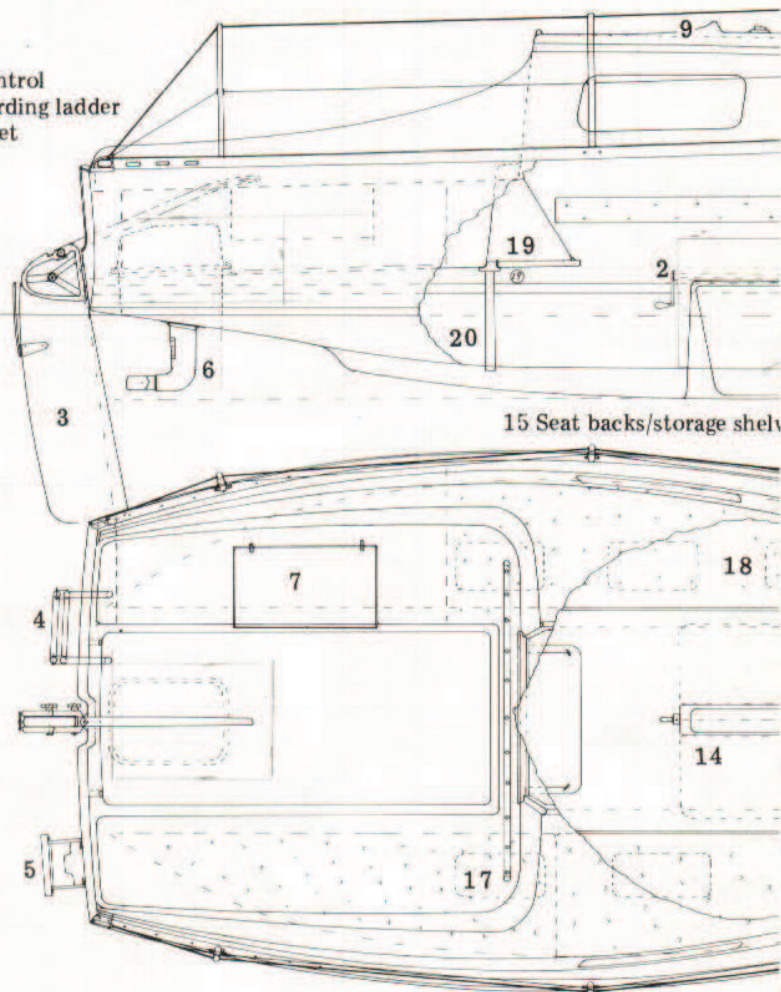


- 3 Kickup rudder with friction control
- 4 Drop down boarding ladder
- 5 Outboard bracket

Sabre

The Sabre 22 has an effective $\frac{3}{4}$ rig making an easy single hand. All sail controls, halyards, & sheets are in the cockpit for easy sheeting.

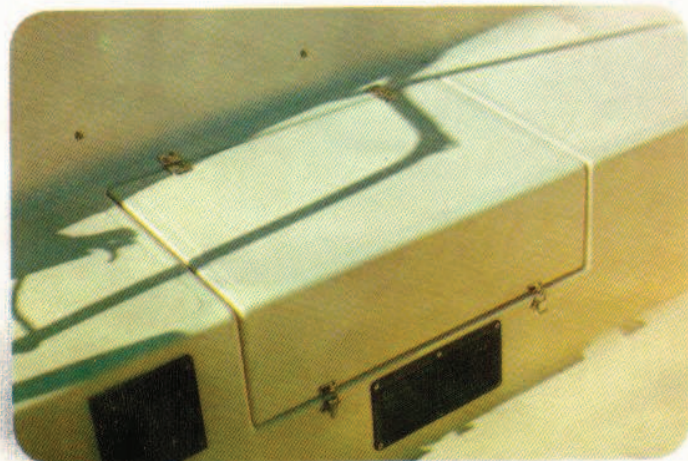
- 9 Pop-top giving full ventilation
- 10 Ford hatch opening



13 14 Galley unit, cooker and drop leaf table.



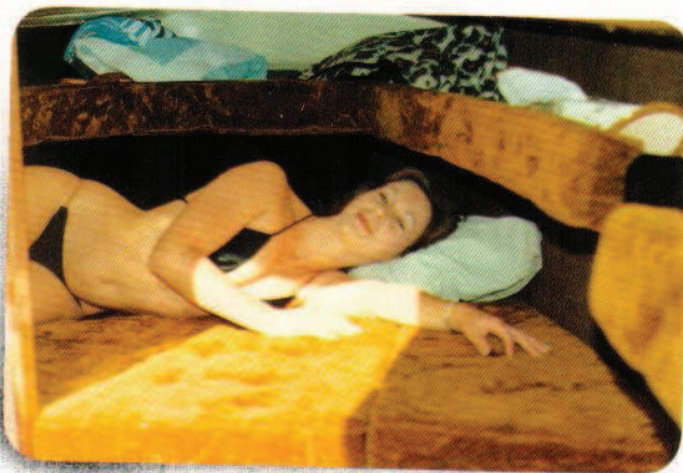
12 Chemical or marine toilet.



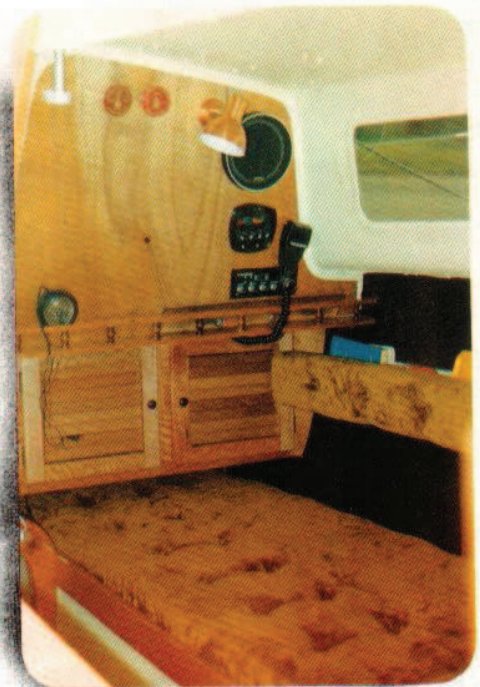
7 Large cockpit locker.

re 22

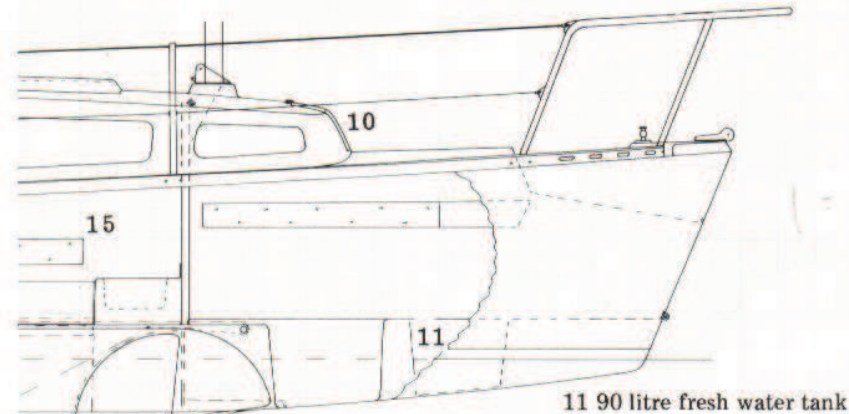
a simple and very
rigging the yacht
d operation.
cluding reefing,
n back to the
rt handed sailing.



16 Entire for'd cabin makes up into double berth.



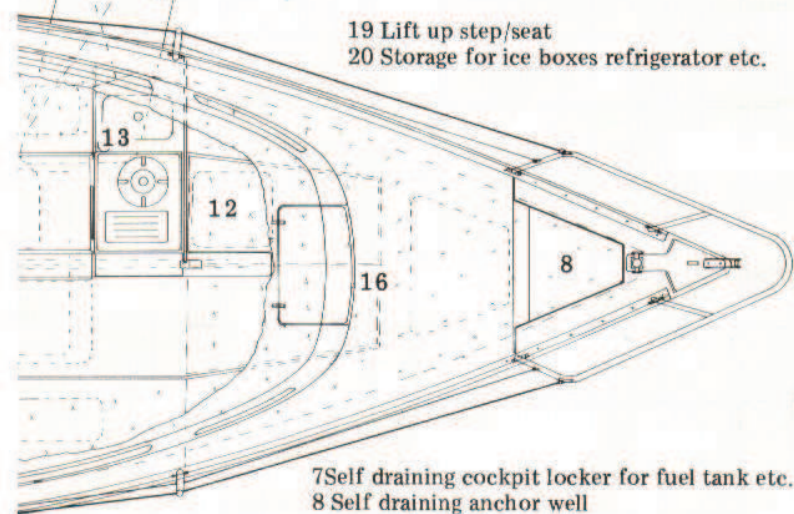
18 Settee berth with optional cocktail cabinet above.



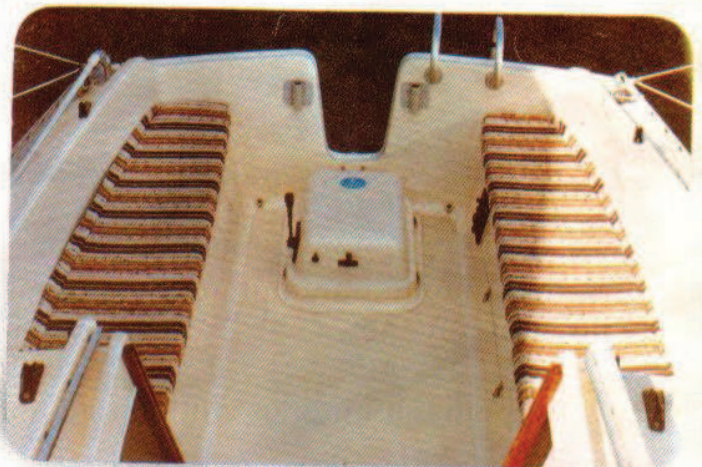
11 90 litre fresh water tank

- 1 Pivoting ballasted keel
- 2 Self sustaining keel winch

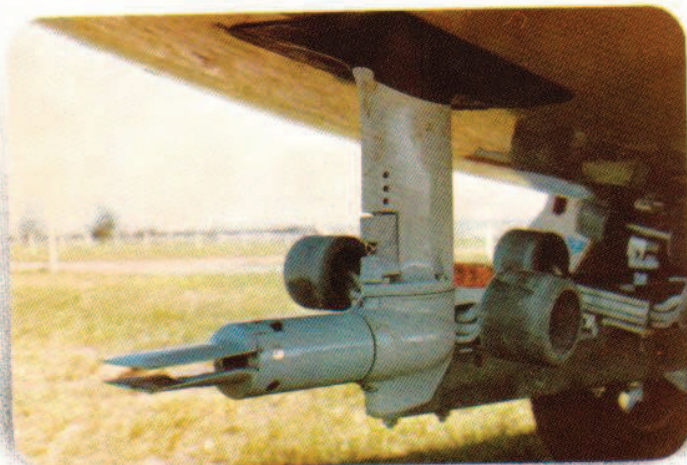
- 19 Lift up step/seat
- 20 Storage for ice boxes refrigerator etc.



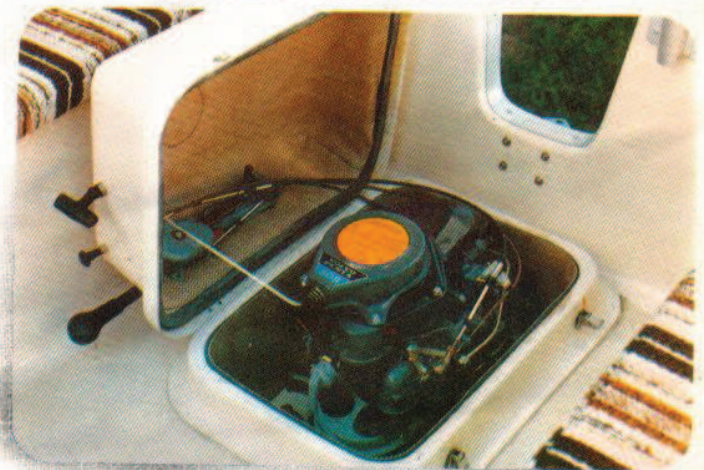
- 7 Self draining cockpit locker for fuel tank etc.
- 8 Self draining anchor well



Spacious cockpit with seating for 6.



6 Sail drive leg with optional folding prop.



Volvo Penta 50's saildrive option.



Sabre 22 has proved very successful at racing.



Fibre-glass mouldings are of the very highest quality.



Easily trailed by the family car.



The ideal family cruising yacht.



CERTIFICATION PLATE

MANUFACTURER **SABRE YACHTS AUST. PTY. LTD.**
257 ELIZABETH AVE. CLONTARF 4019

MODEL NO. **SABRE 22** TYPE **YACHT** YEAR **1982**

CAPACITY INFORMATION

	OUTBOARD	INBOARD
MAXIMUM POWER	150	150
MAXIMUM PERSONS CAPACITY	15	15
MAXIMUM WEIGHT CAPACITY	1500	1500
MAXIMUM ENGINE & FUEL	N/A	N/A

THIS BOAT COMPLIES WITH THE REQUIREMENTS OF THE A.B.I.A. CERTIFICATION PROGRAMME IN EFFECT AT DATE OF CERTIFICATION

SECTION I SAFETY ☒ YES SECTION II CONSTRUCTION ☒ YES

ENGINE FITTED ☒ YES FUEL SYSTEM FITTED ☒ YES

AUSTRALIAN BOATING INDUSTRY ASSOCIATION LTD.

Specification:-	Imperial	Metric
Length overall	21'9"	6.63
Length waterline	19'1"	5.8
Beam overall	8'2"	2.45
Beam at waterline	7'1"	2.16
Displacement	2094 lbs	952 kg
Ballast	750 lbs	341 kg
Weight on trailer	2944 lbs	1338 kg
Draught keel up	1'2"	.36
Draught keel down	4'6"	1.37
Height on trailer	7'6"	2.28
Main sail	148 sq. ft.	13.8 sq. m.
Jib	85 sq. ft.	7.9 sq. m.
Spinnaker	377 sq. ft.	35 m

We at Sabre Yachts believe safety is of paramount importance in family yachting and our Sabre 22 is one of the first yachts in Australia to receive safety certification under the Australian Boating Industries Association Boat Certification Scheme.

This means your Sabre 22 has been thoroughly tested for soundness of design and construction and meets stringent safety standards before being passed over to you the customer.

Remember:- For Safety's Sake Go Certified.

Sabre 22

Sabre 22 is Manufactured and
 Marketed by Sabre Yachts Australia Pty. Ltd.
 257 Elizabeth Ave. Clontarf Queensland
 4019, Ph. (07) 284 4822